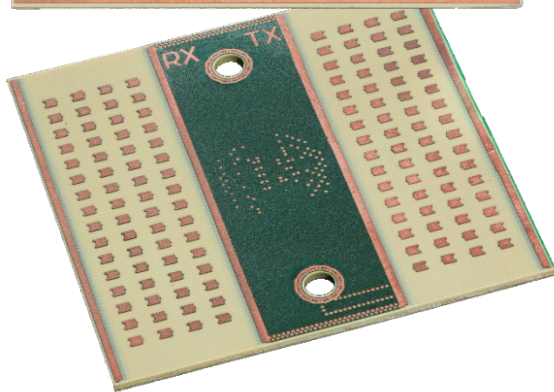
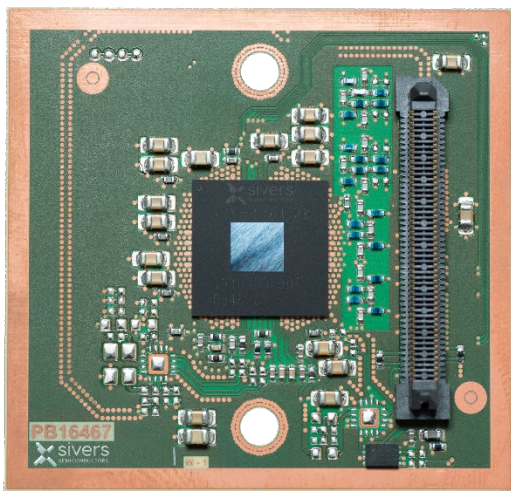




Fully powered 60 GHz Fixed Wireless Access product with great range



Why should you design the Radio Frequency part in your 60 GHz beamforming access product, when Sivers Semiconductors has done the work for you? Utilize the benefits of our RF modules BFM06010 and BFM06011. Unmatched power performance and throughput together with an integrated antenna gives you a competitive advantage in the unlicensed 5G race.

By combining the market leading performance of the TRX BF/01 RFIC with innovative antenna design, you get the flexibility and performance required for large deployments of 60 GHz FWA networks. Transmitted power of +40 dBm also for the highest data rates with electronic beam steering in one single module enable FWA product deployments in the most diverse applications.

This is the module that can differentiate your 60 GHz fixed wireless access product.



FWA



5G MMWAVE



BACKHAUL



V2X

- 57 - 71 GHz
- Optimized for 802.11ad/WiGig TDD
- Supported throughput 7 Gbit/s
- Enables 64 QAM and beyond (with internal synthesizer)
- 16+16 Tx/Rx Array
- Direct conversion I/Q transceiver
- IF bandwidth 1.2 GHz
- Integrated beam book for instant beam steering / forming
- +40 dBm TX EIRP using 16 QAM modulation scheme
- 7 dB NF (Noise Figure)
- Reference clock support:
 - Internal (BFM 06011)
 - External (BFM 06010)
- eWLB (embedded Wafer Level Ball Grid Array) packaged device
- Seamless low-cost modem integration through integrated analog baseband